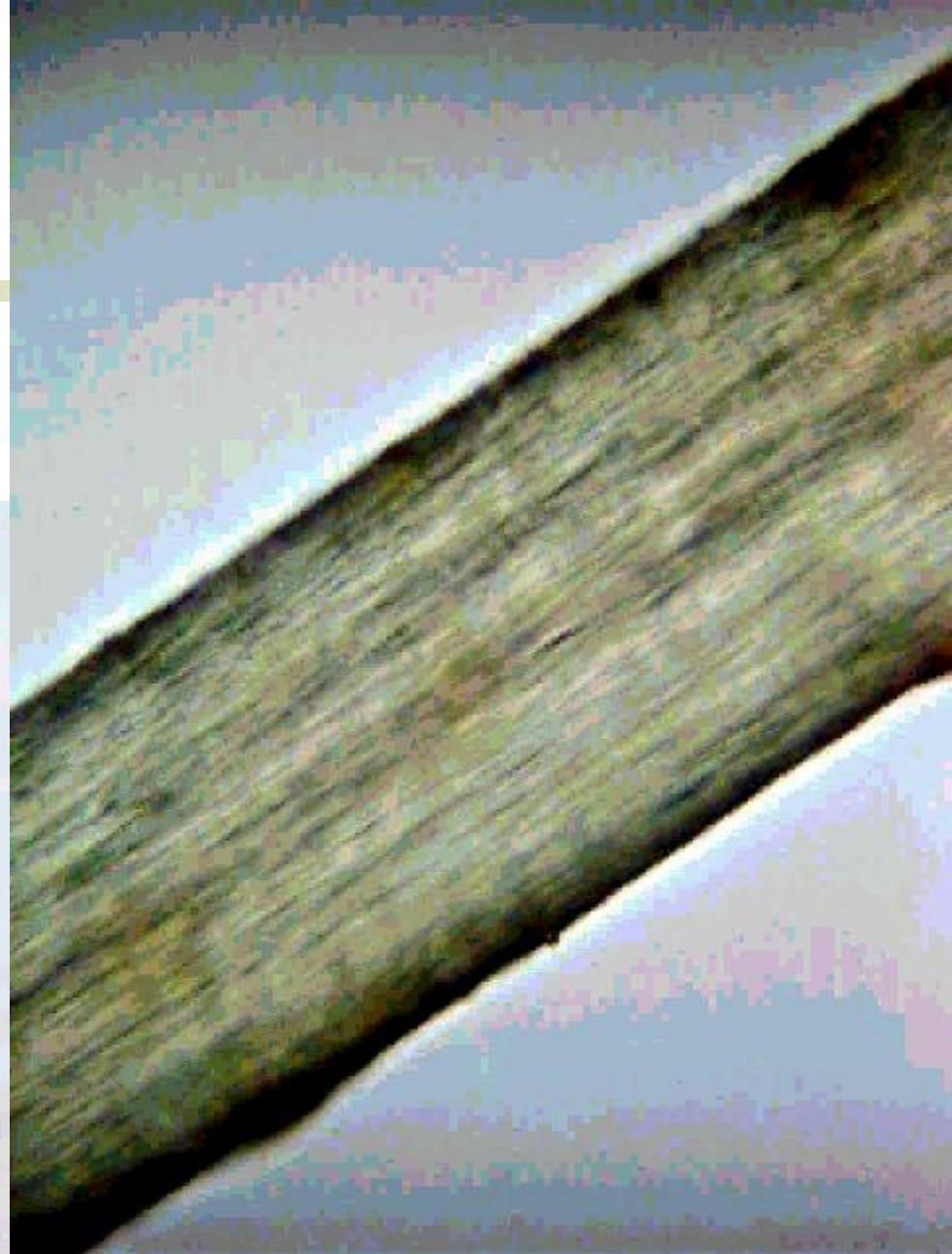


Species & Conditions of Hair

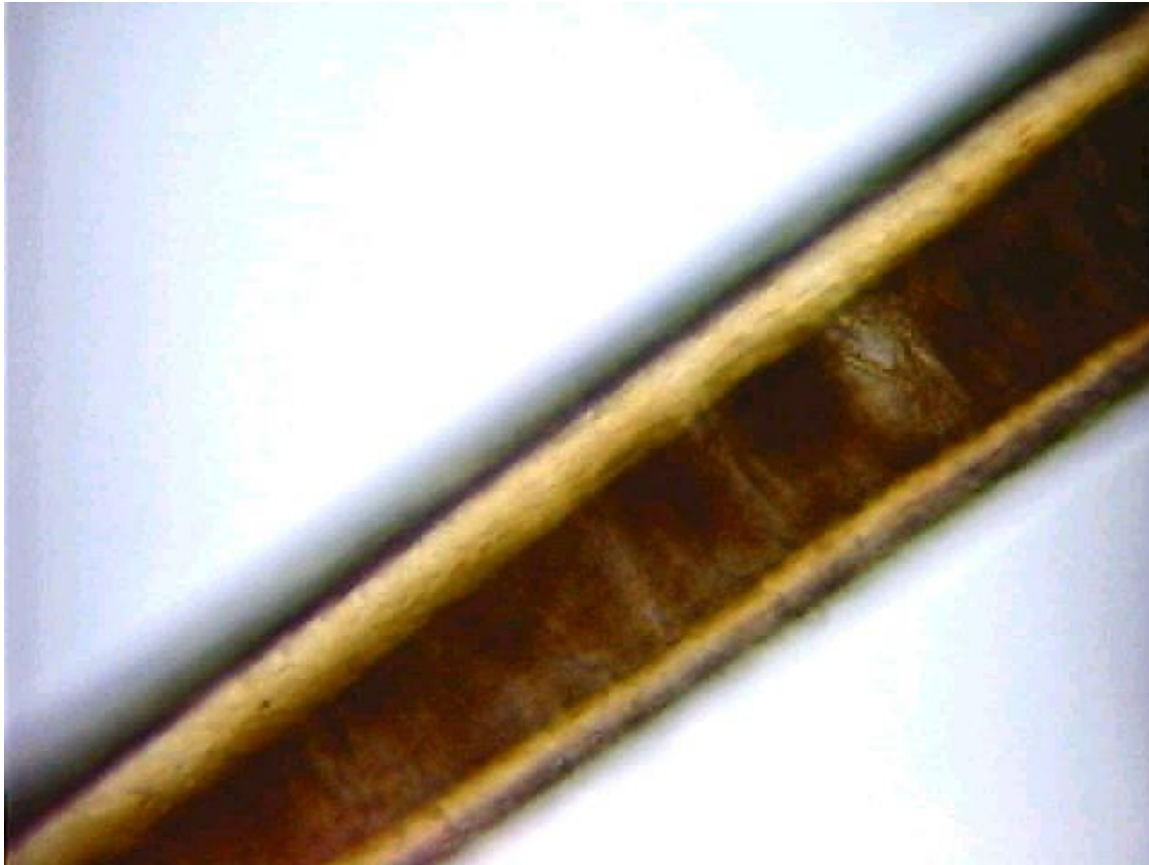
Human Hairs



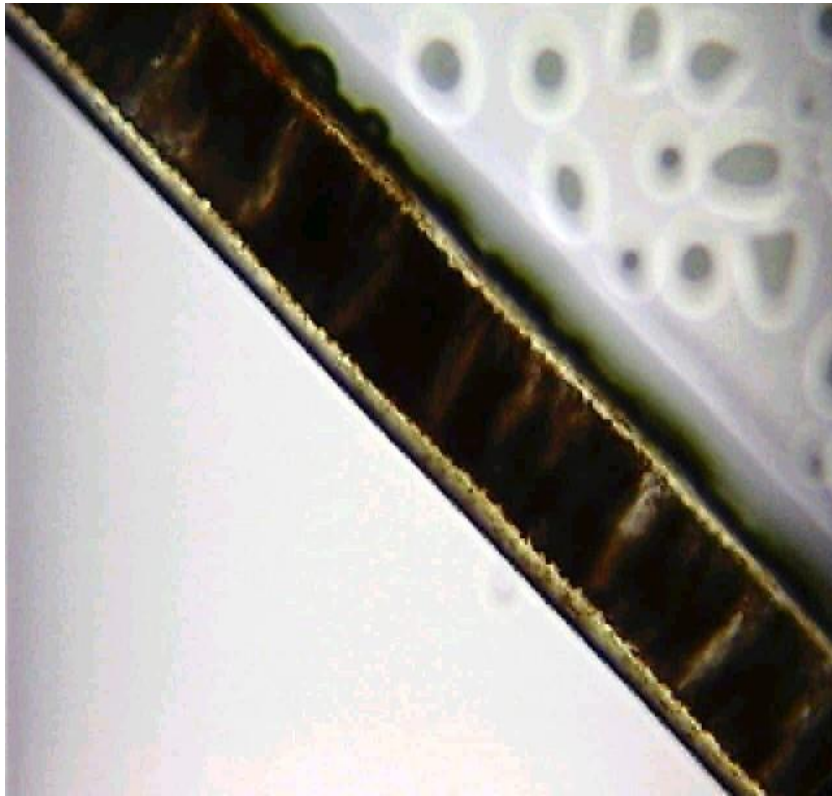
[Horse Hair



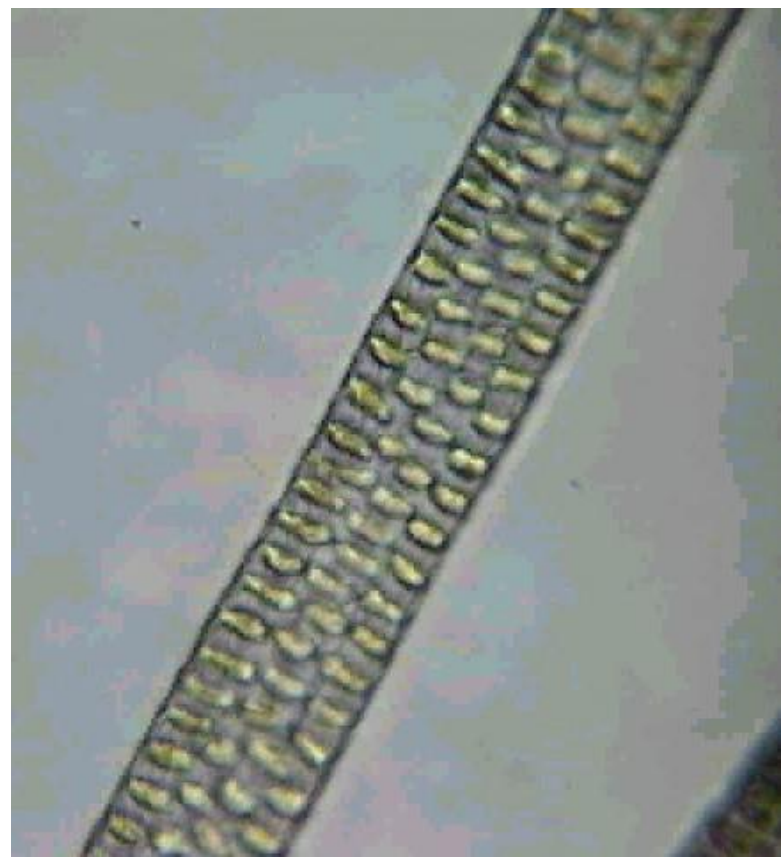
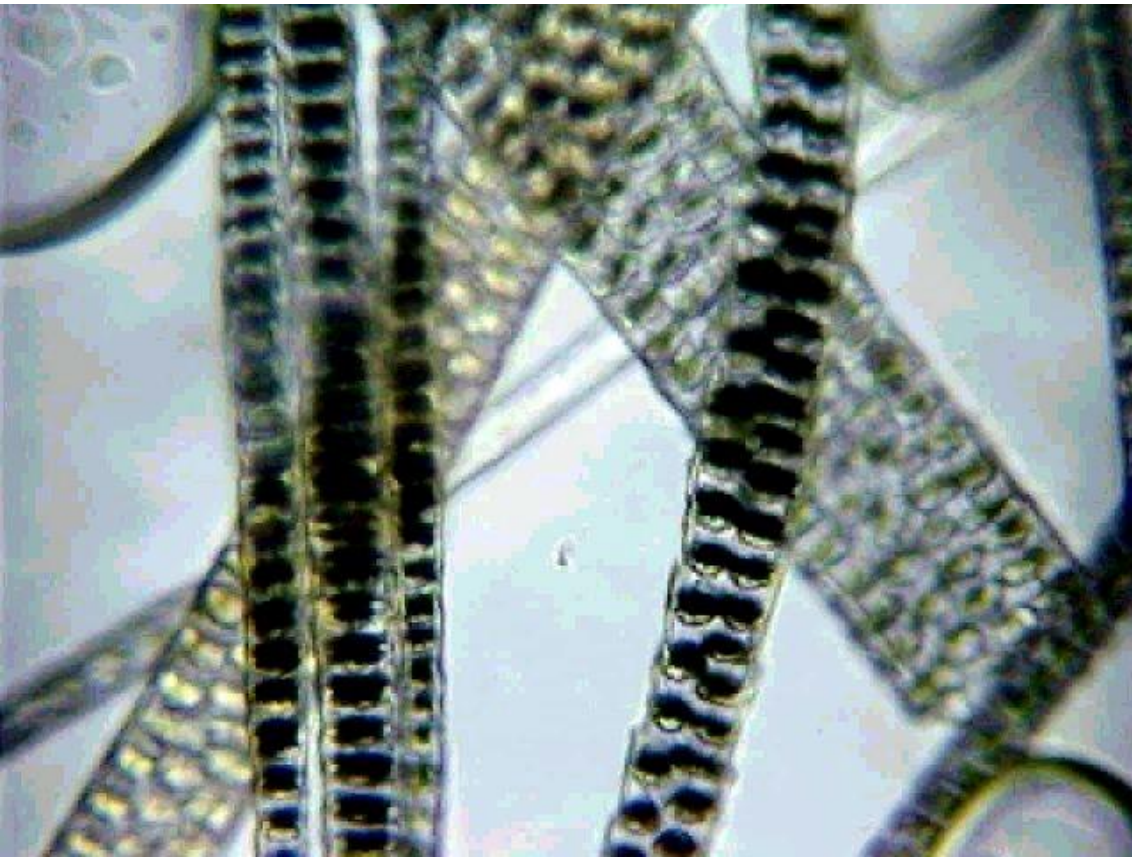
[Dog Hair]



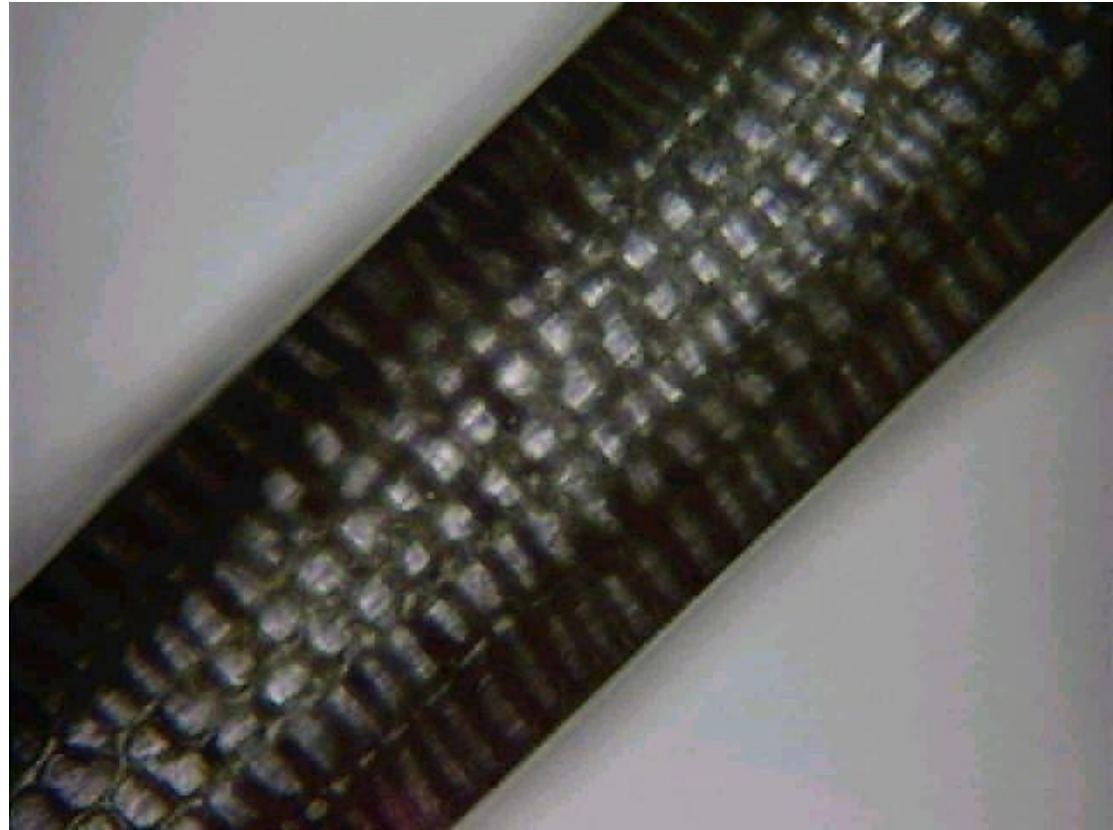
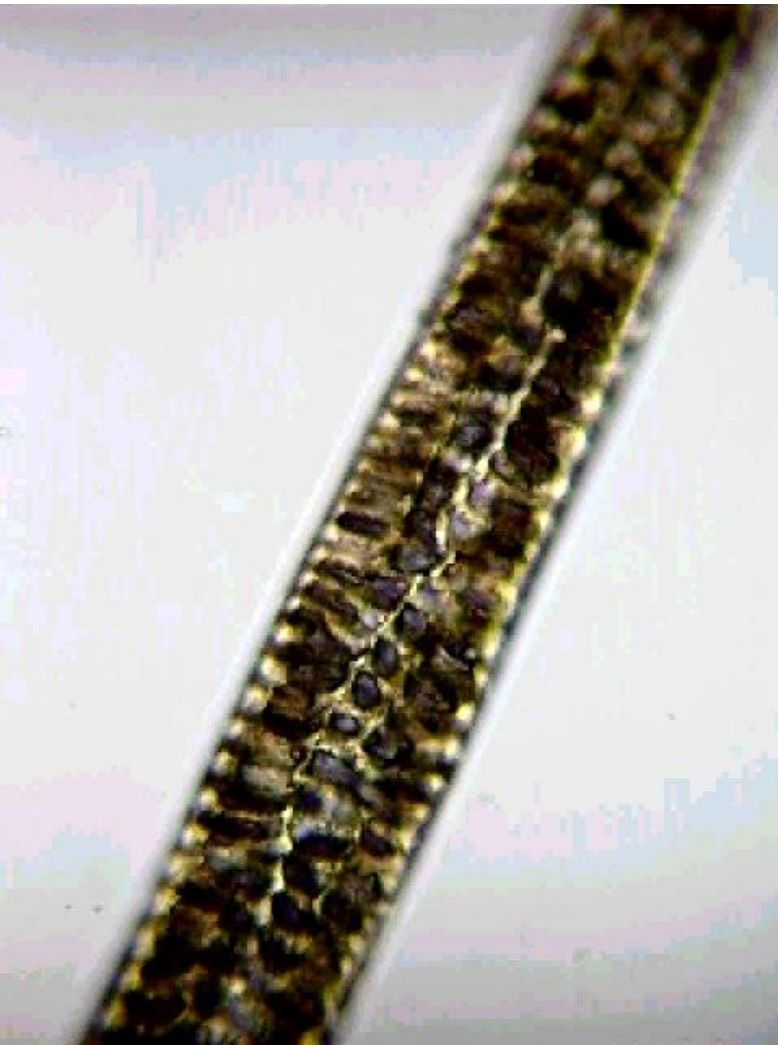
[Cat Hair]



[Mouse Hair



[Rabbit Hair]



[Deer Hair]



[Cow Hair



[Pig Hair]



]



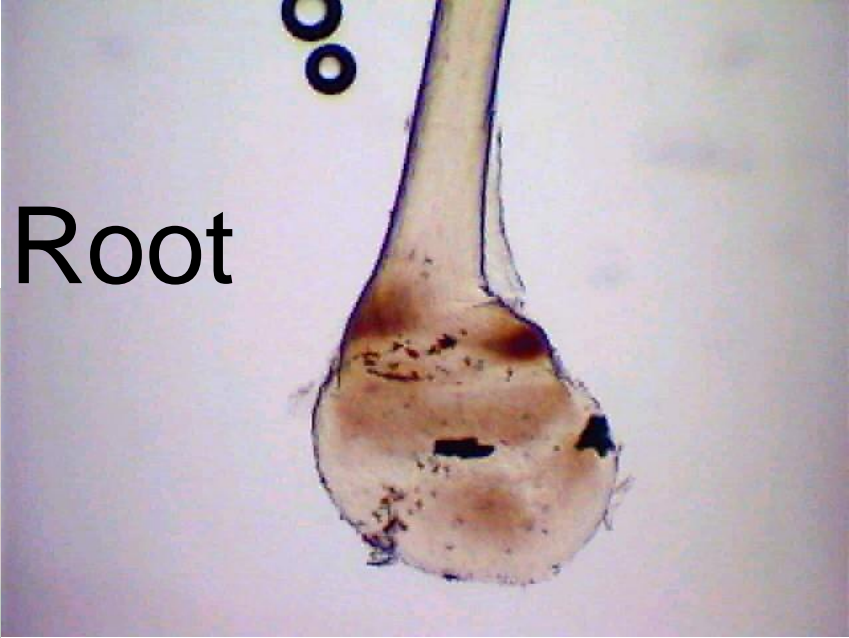
Special Conditions of Hair

The following slides show the ends of several different species of hairs

[Fallen Out Hairs]



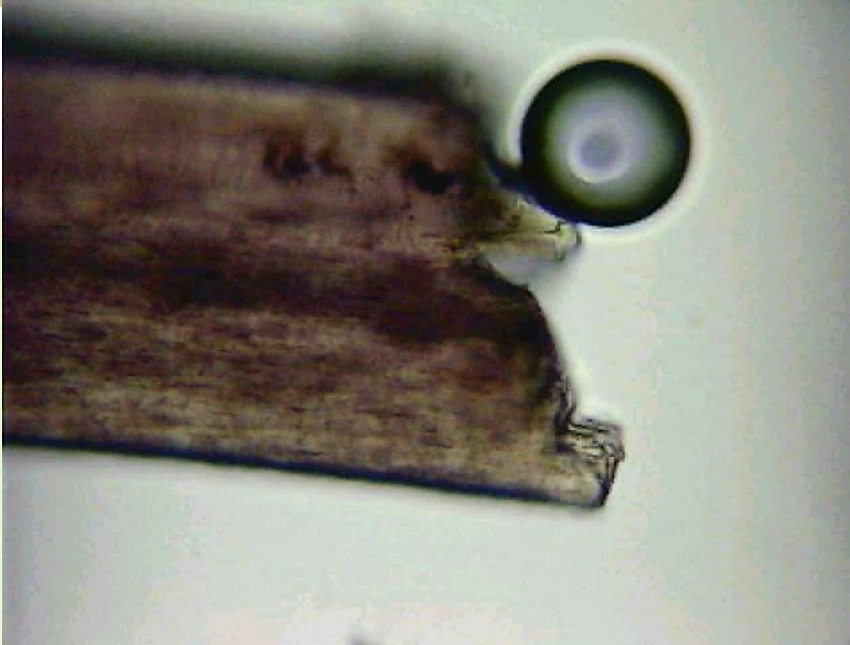
[Pulled Out-By the Root



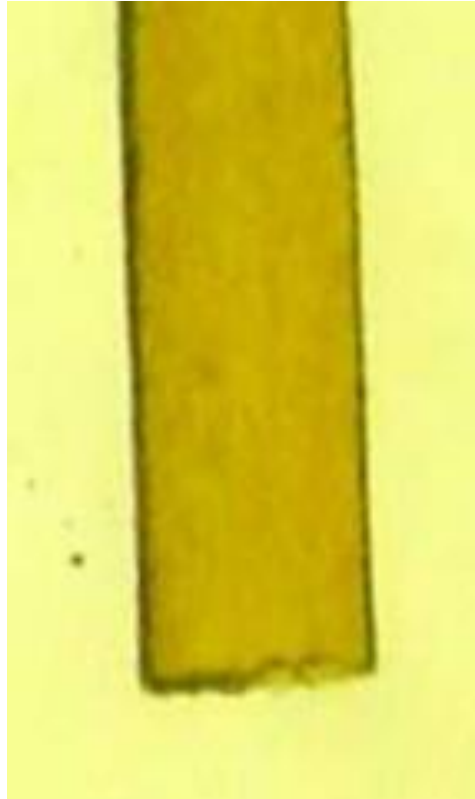
[Natural Tip]



[Broken-Torn]



[Cut Hair]





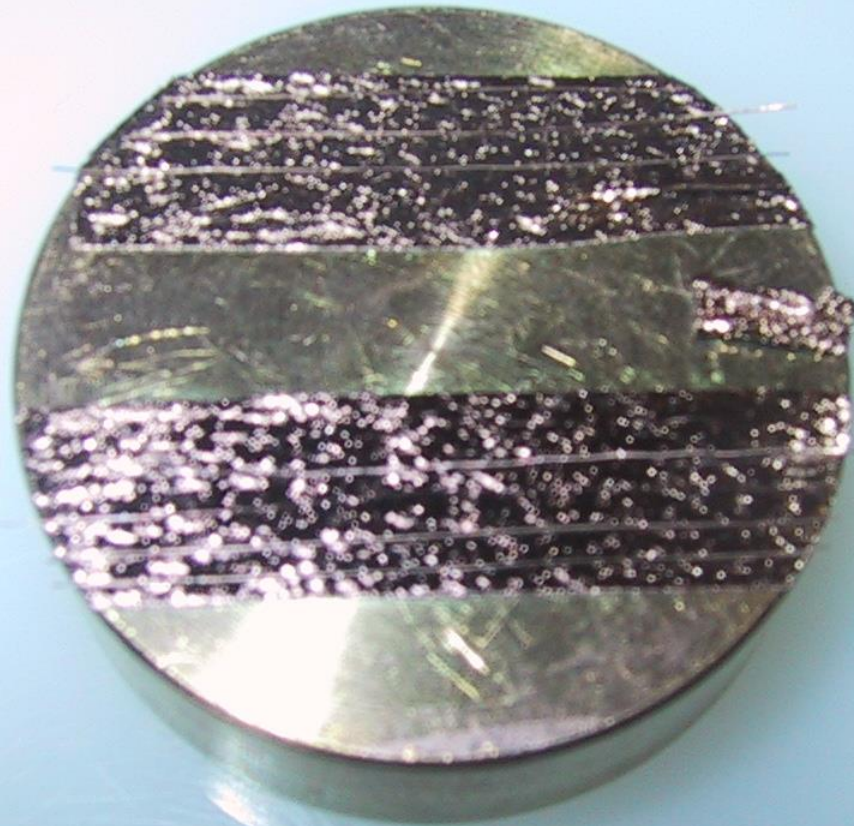
Cuticles

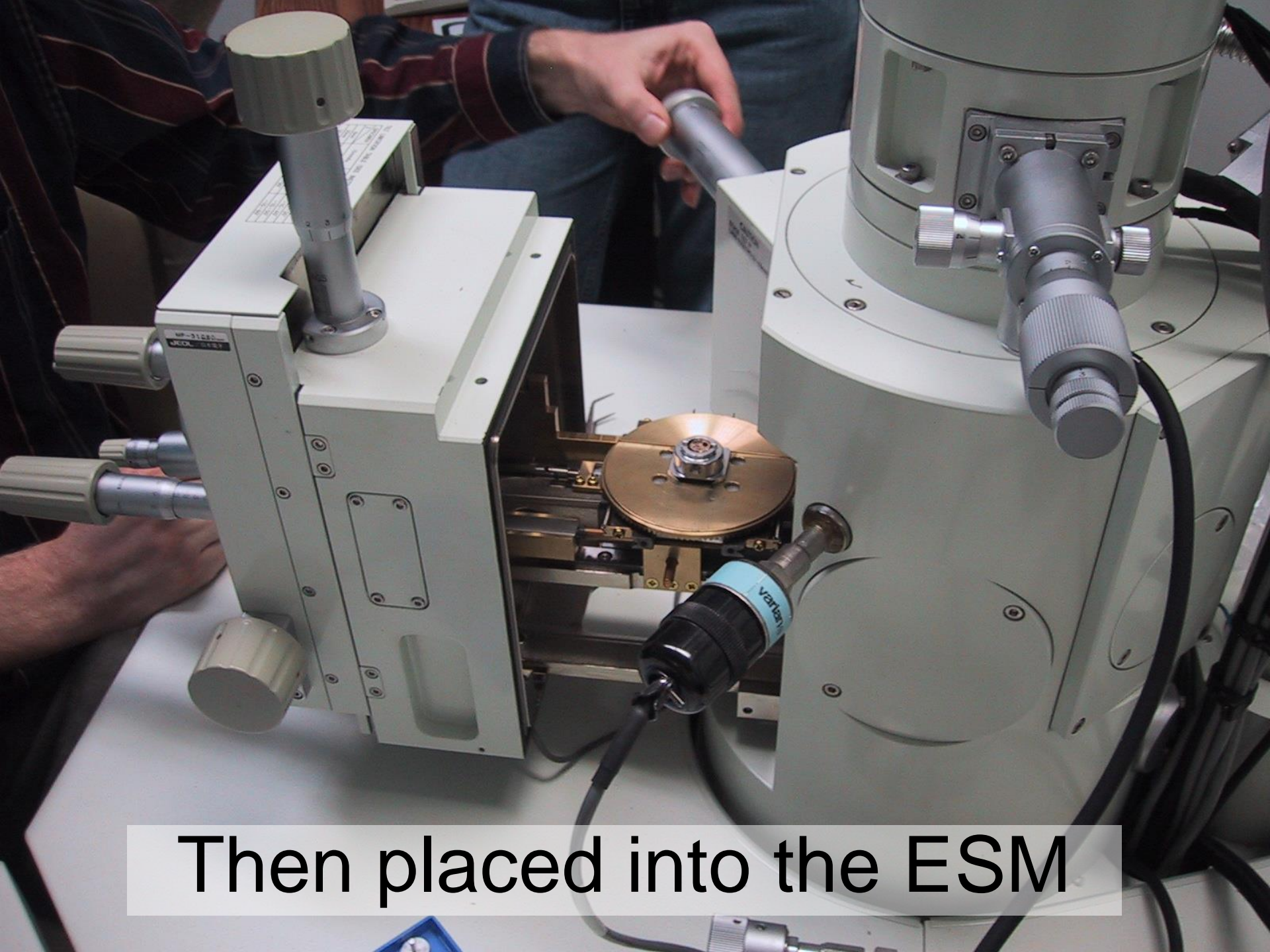
The following pictures were
taken with the an electron
scanning microscope

Electron Scanning Microscope



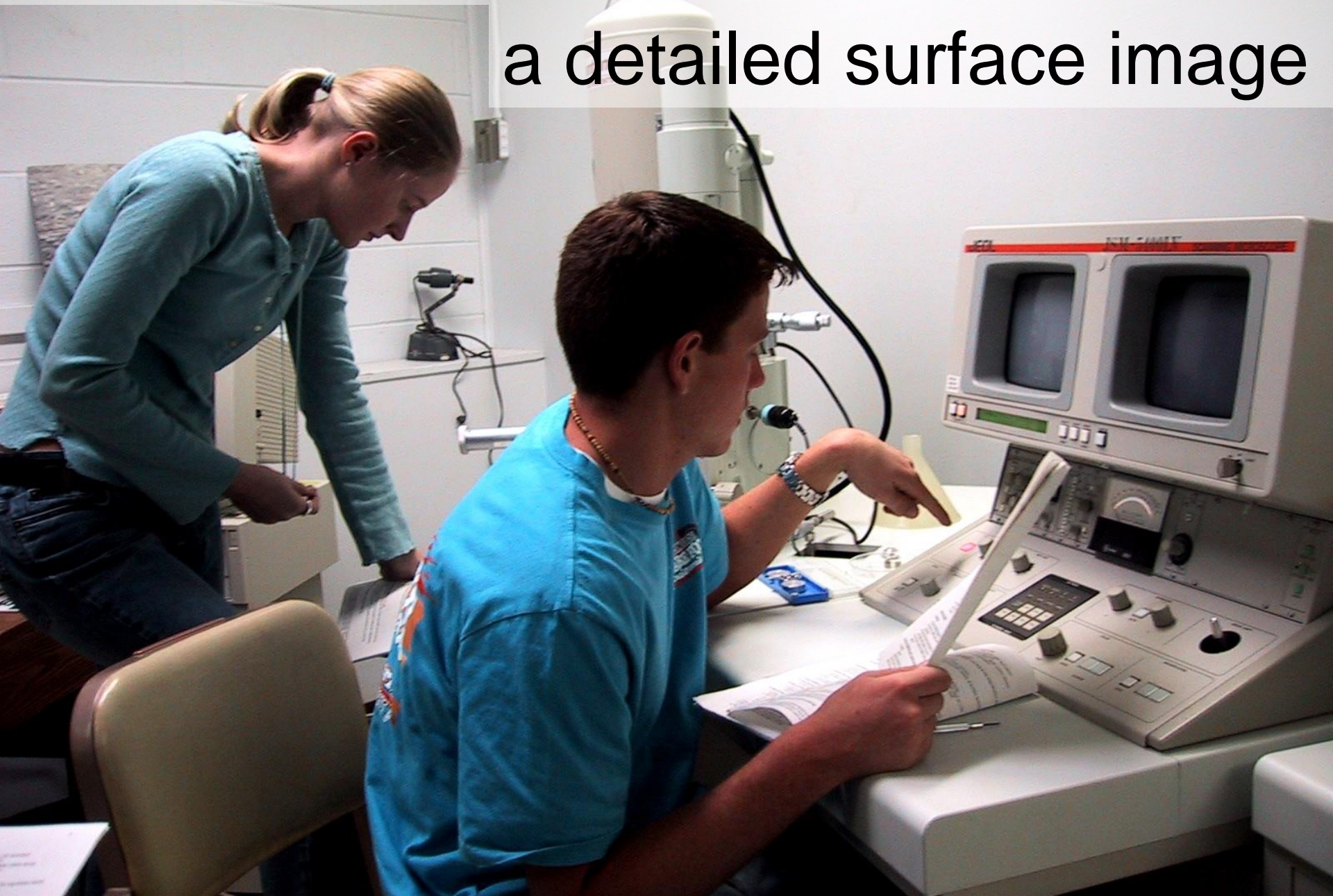
Hairs are gold plated





Then placed into the ESM

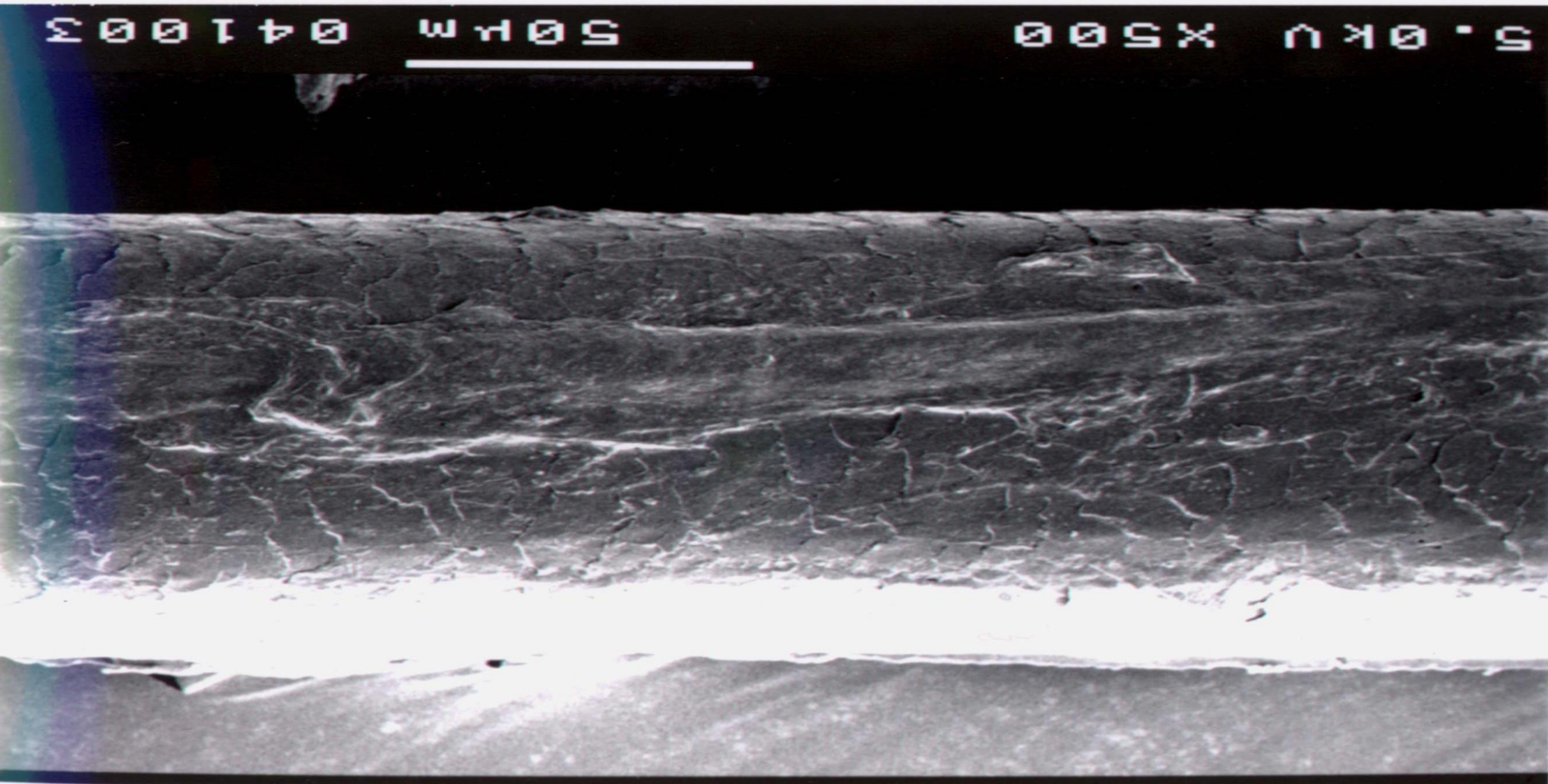
Finally, the reflection of electrons reveal
a detailed surface image



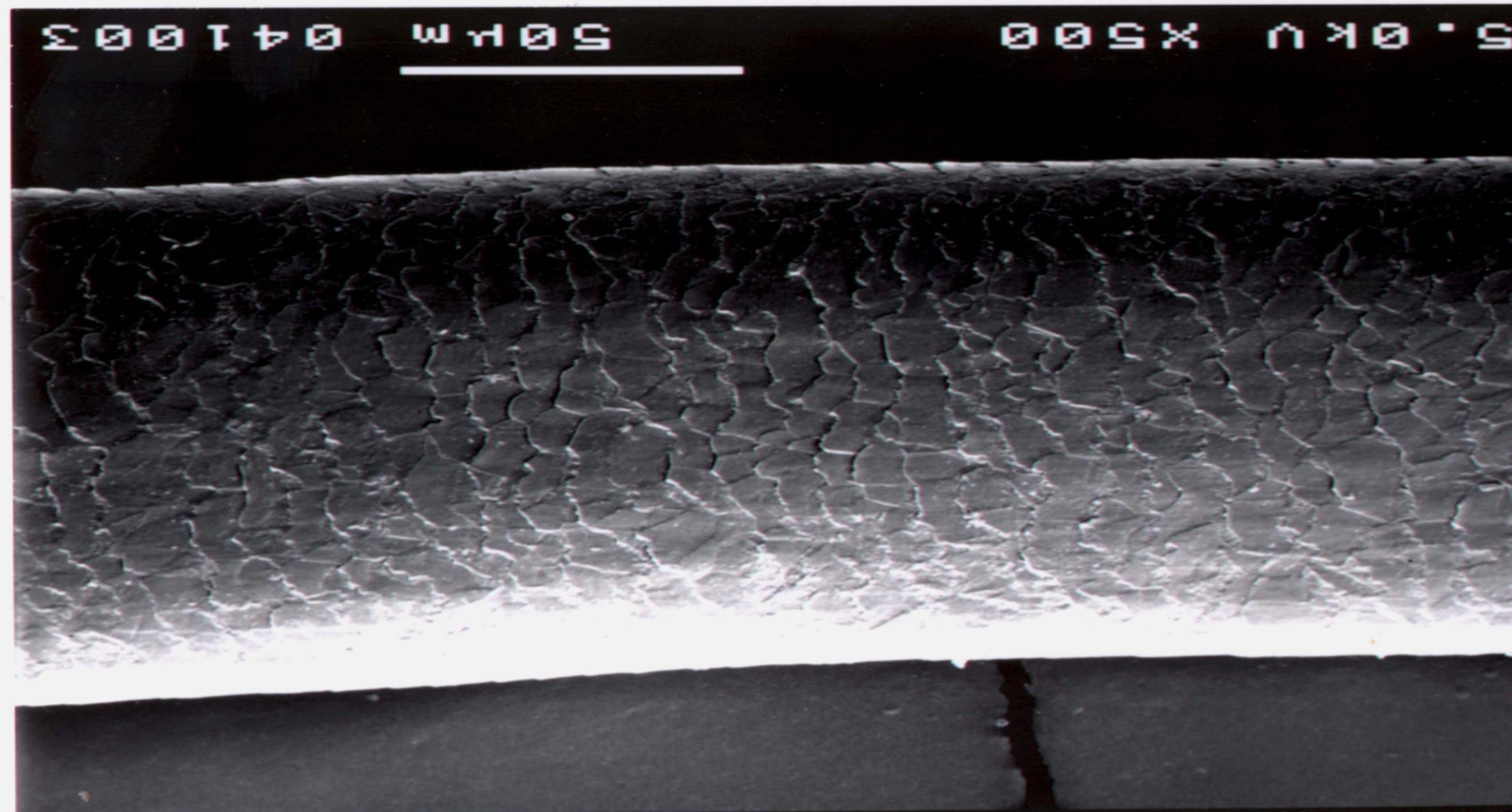
Human Hairs



Human Hair with Gel

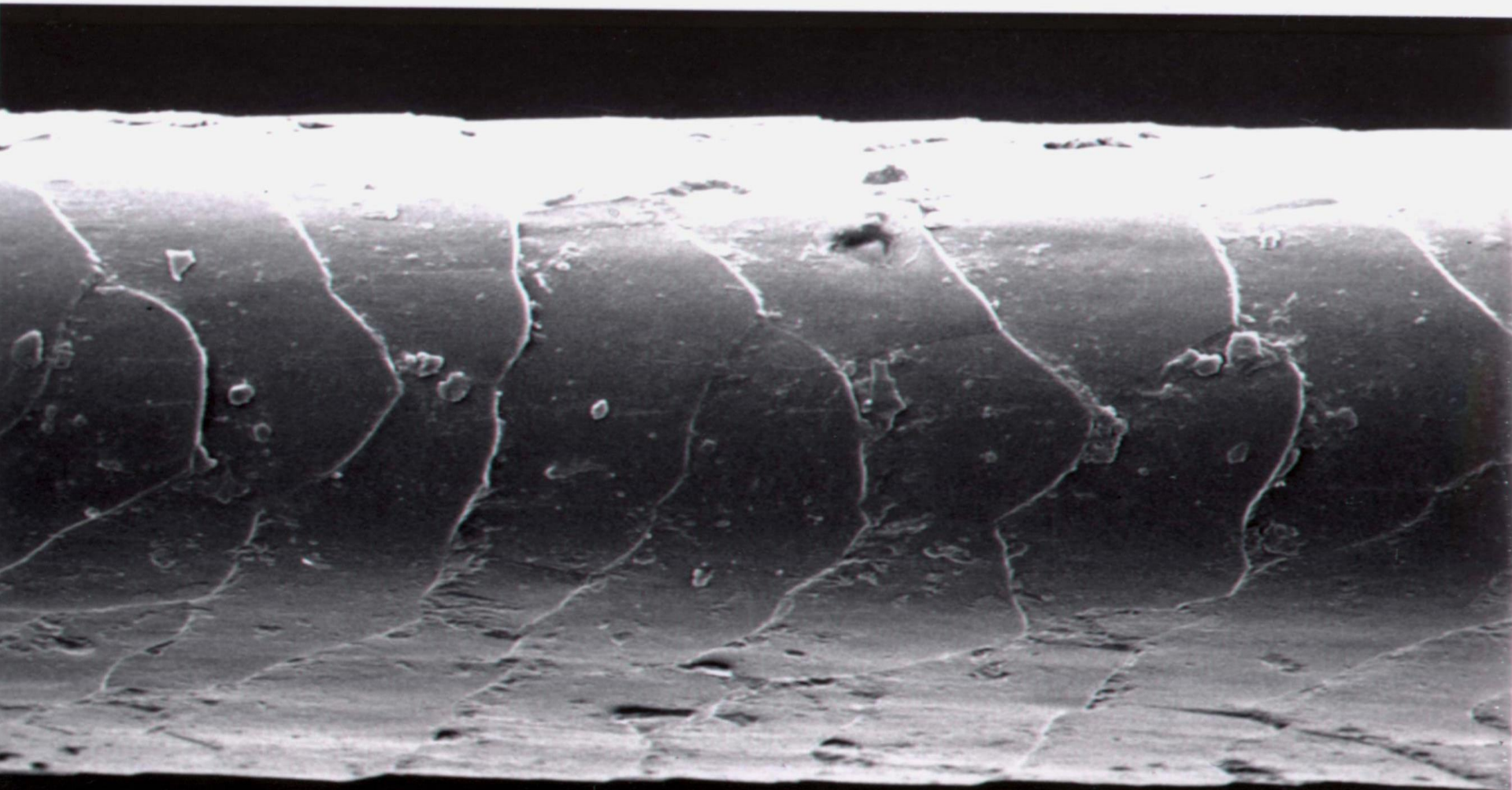


Human-Pubic Hair



Cat Hair

1

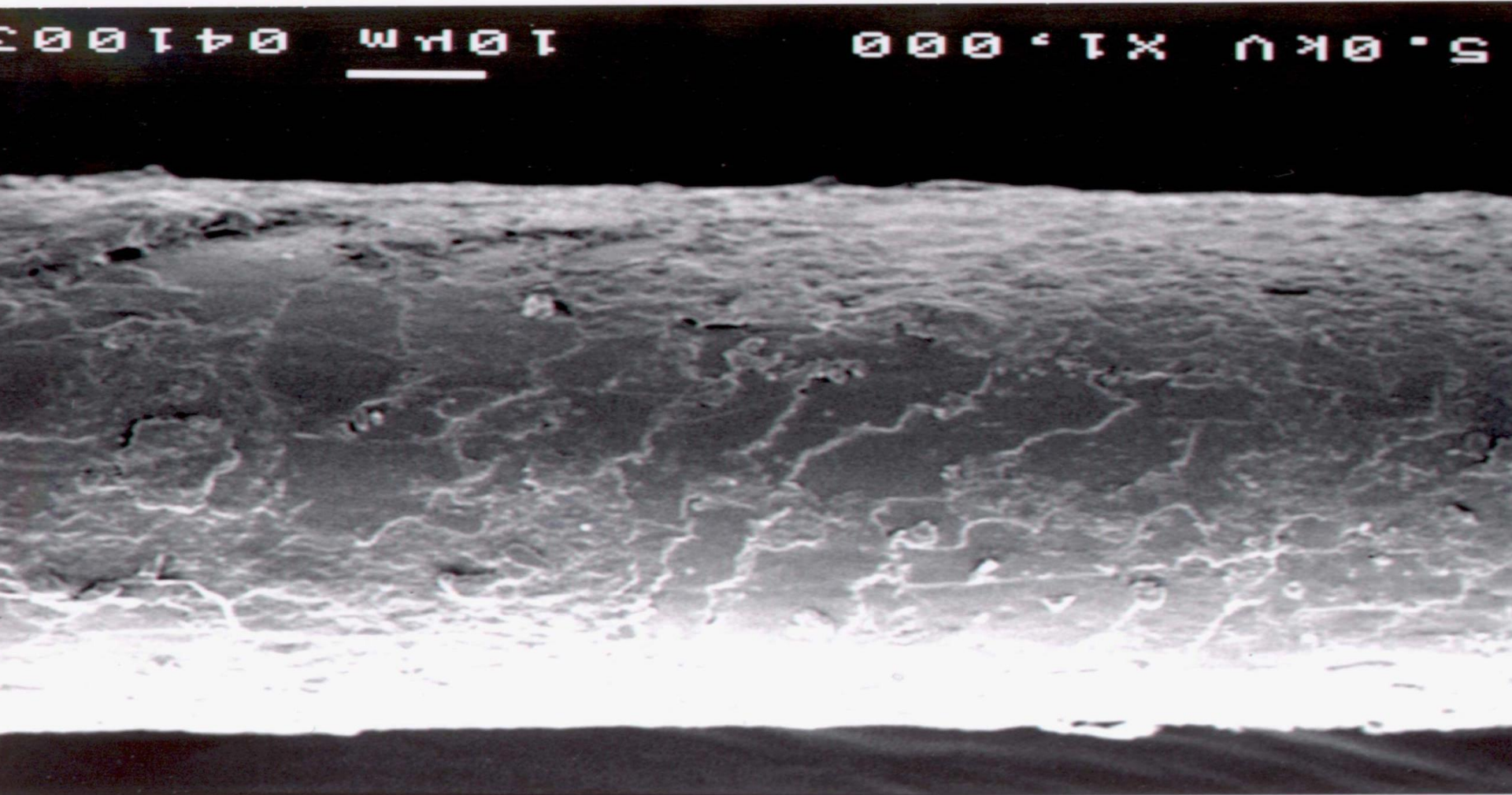


5.0kV X1,500

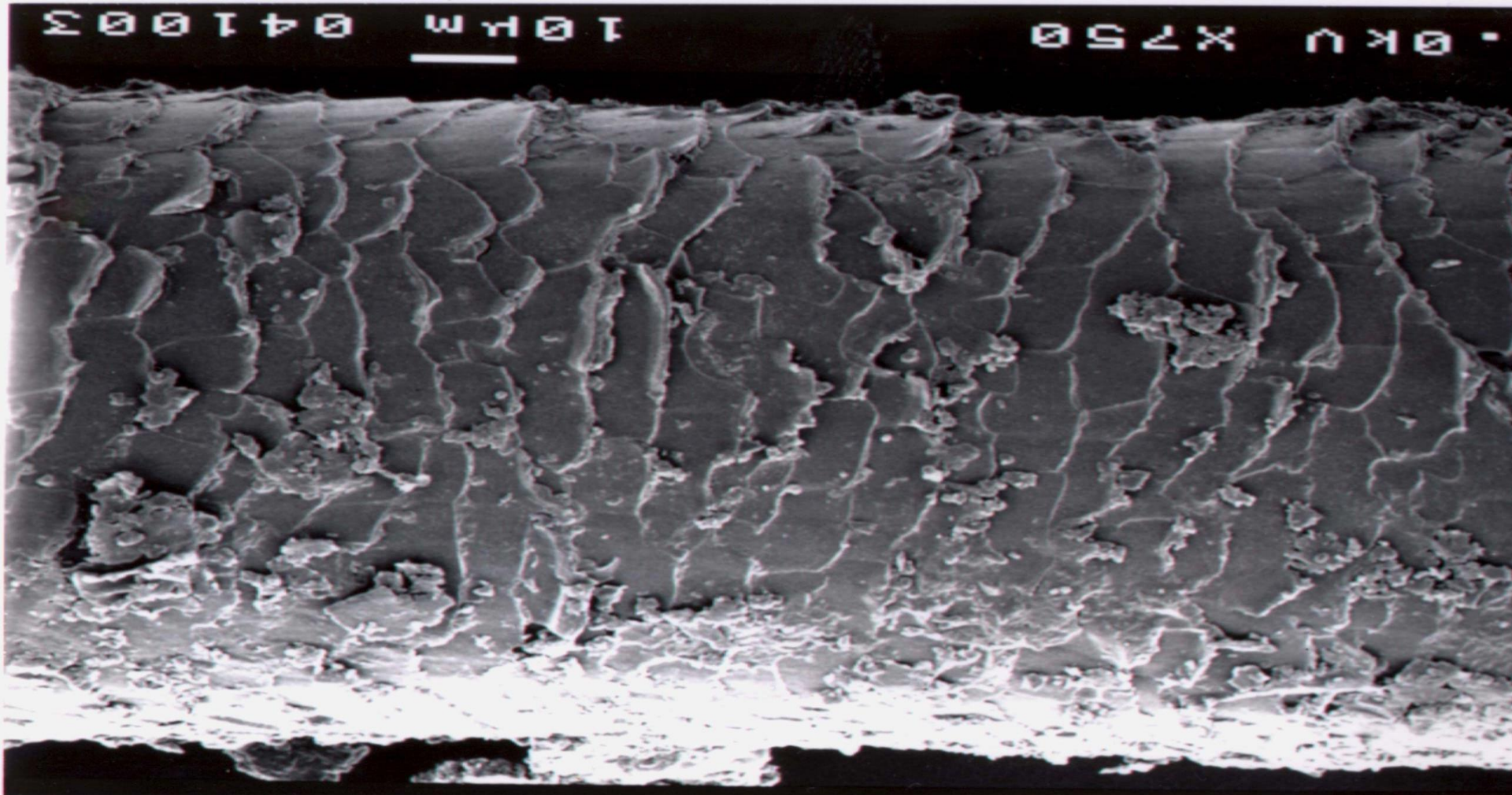
10µm

041003

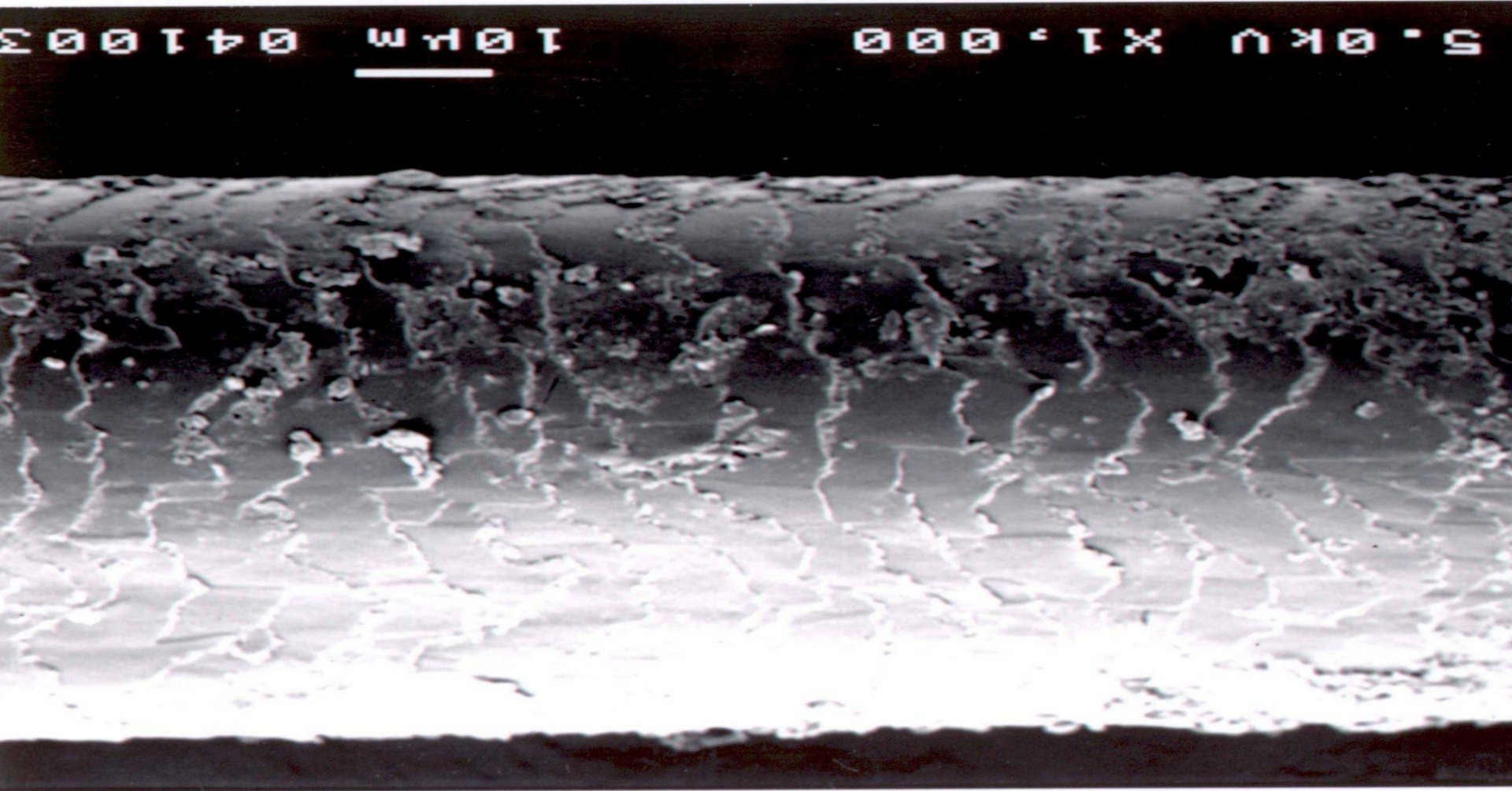
Cow Hair



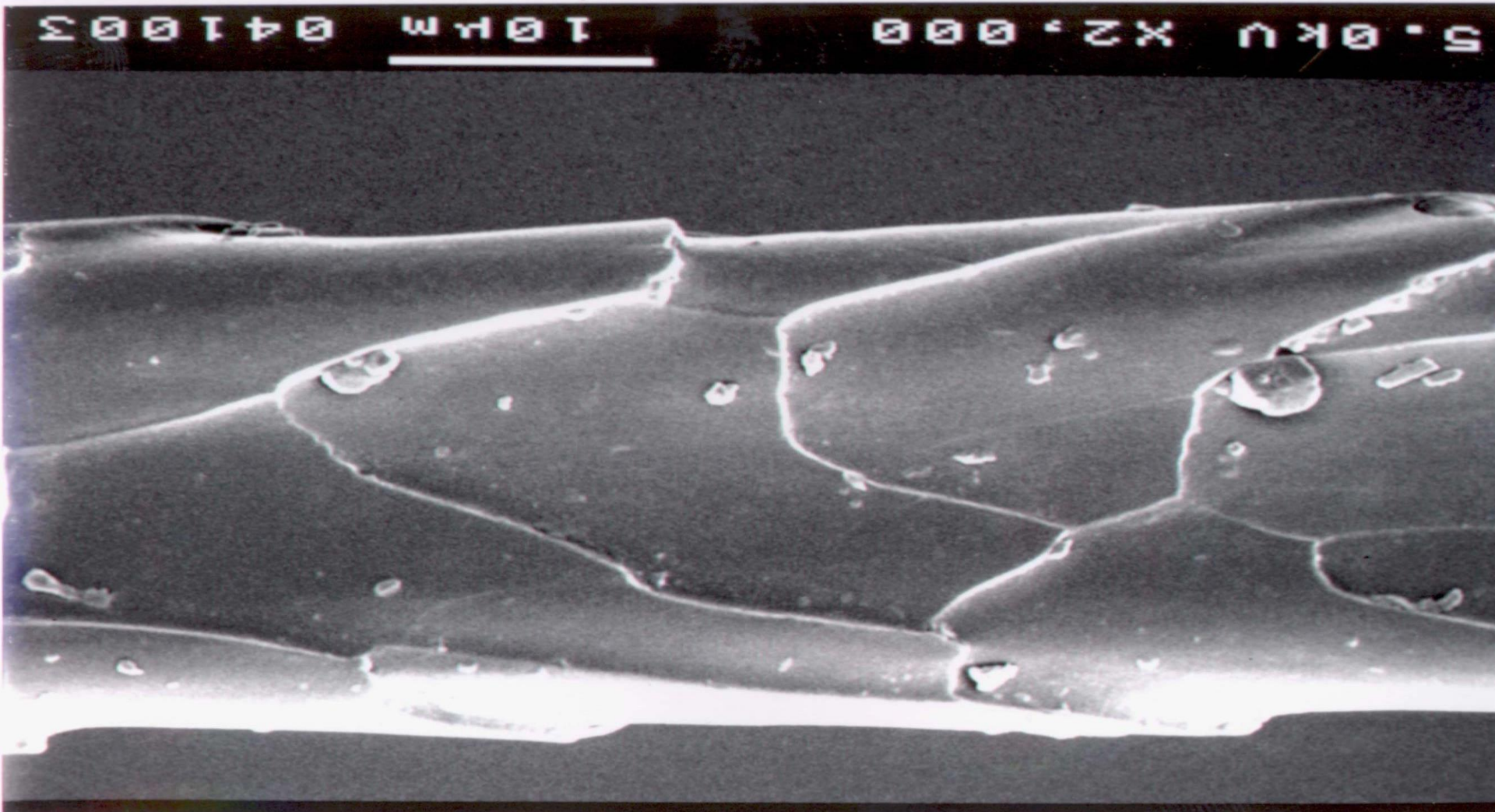
Deer Hair



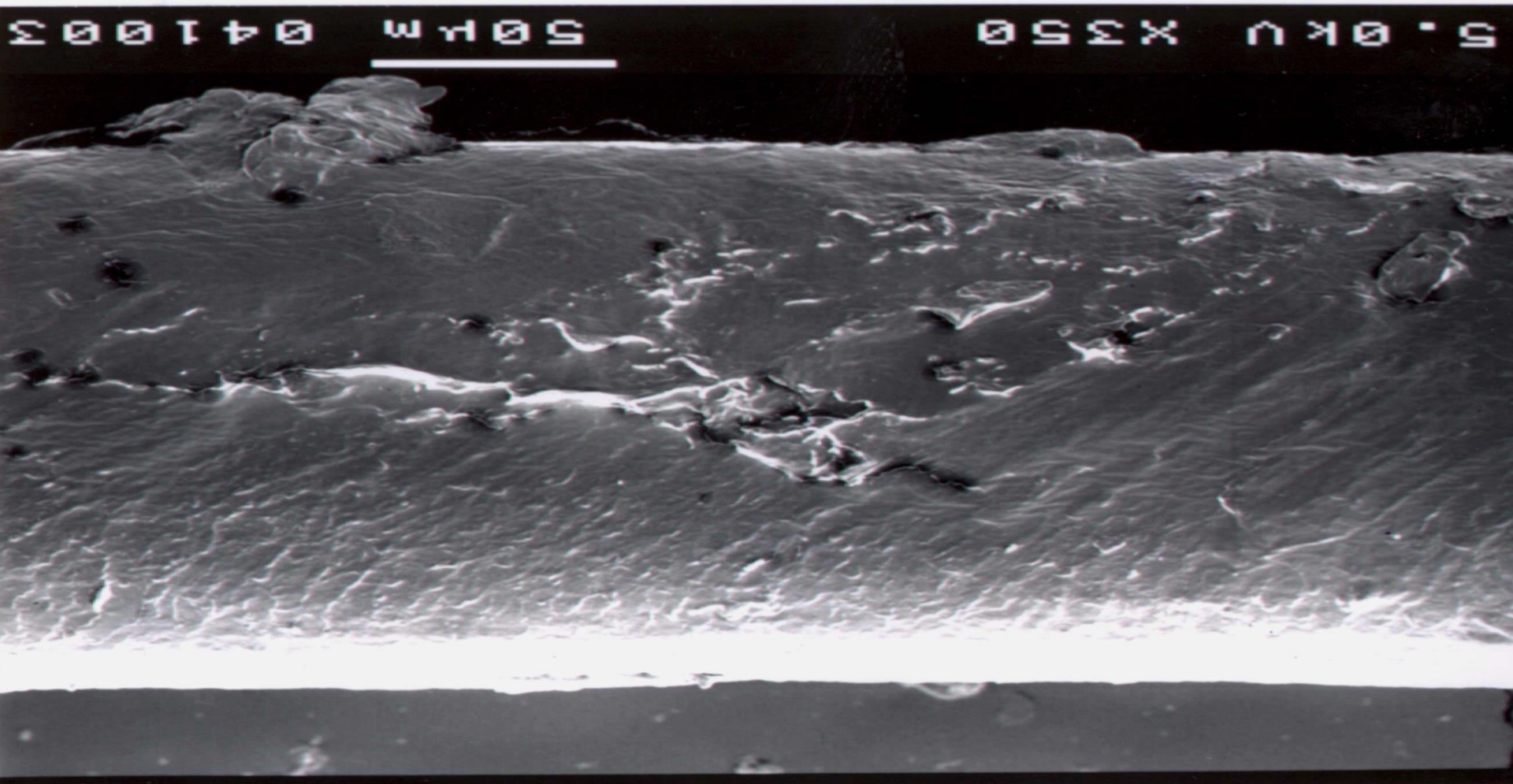
Dog Hair



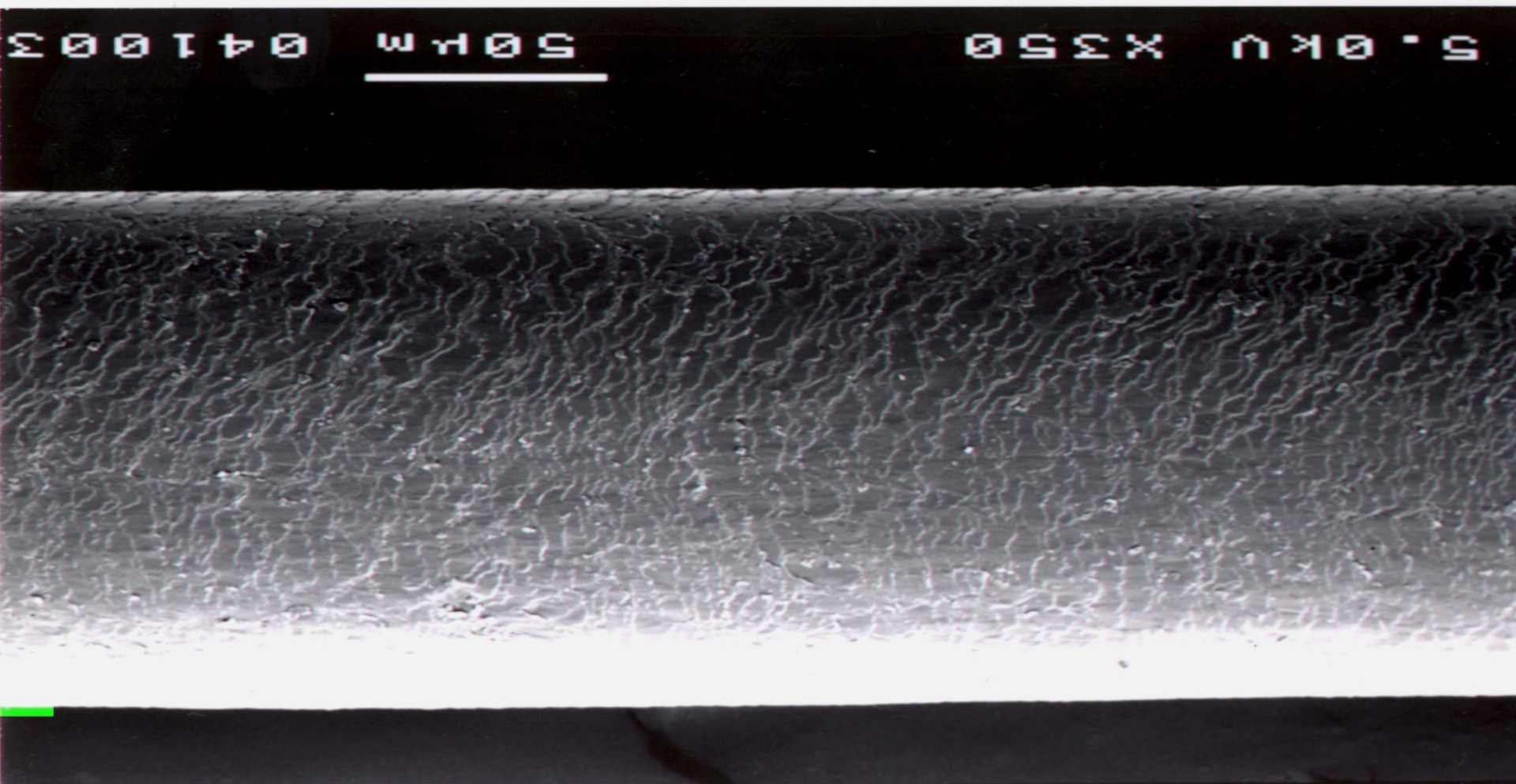
Mouse Hair



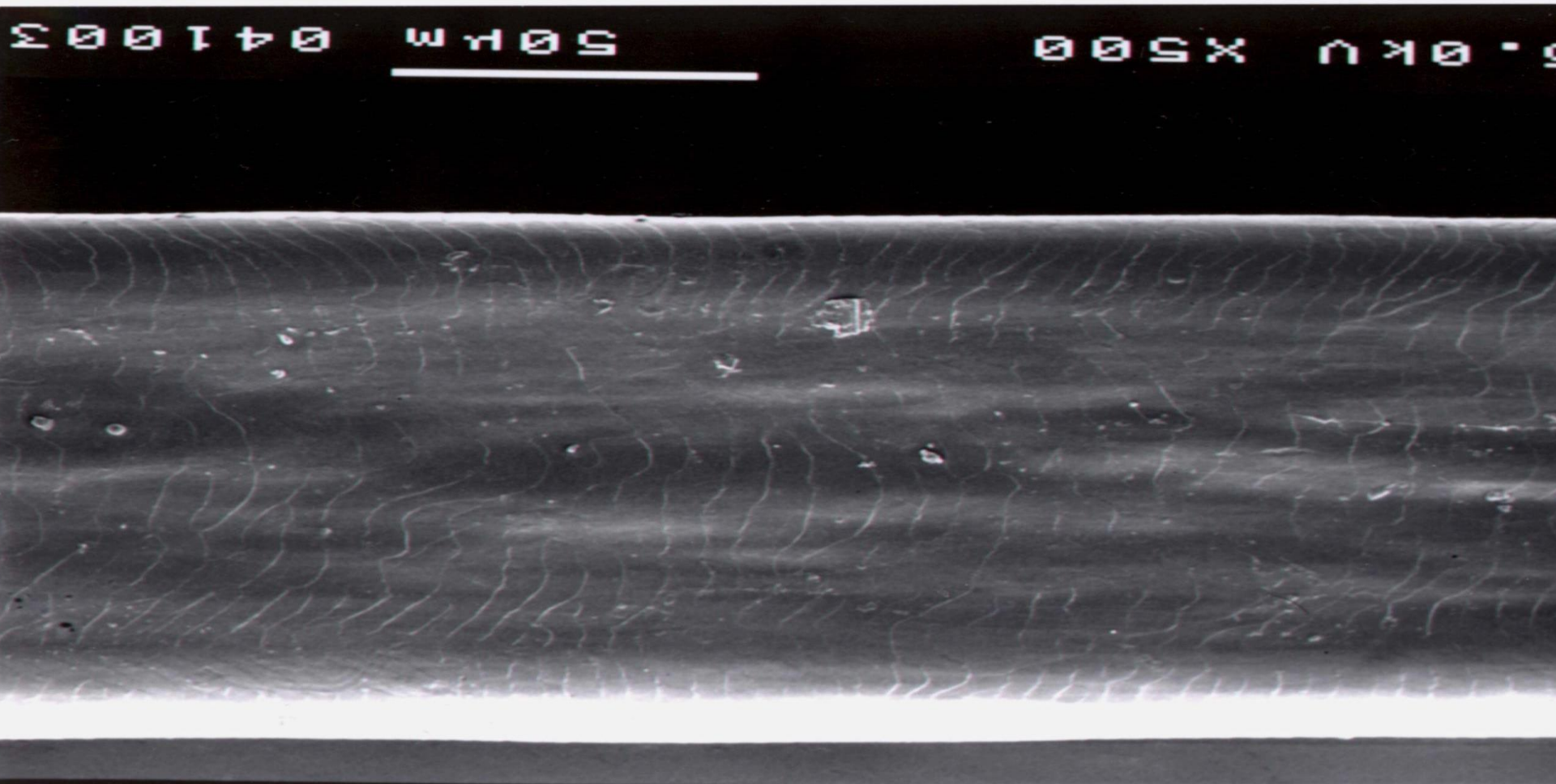
Mustache Hair with Wax



Pig Hair



Rabbit Hair



Squirrel Hair

